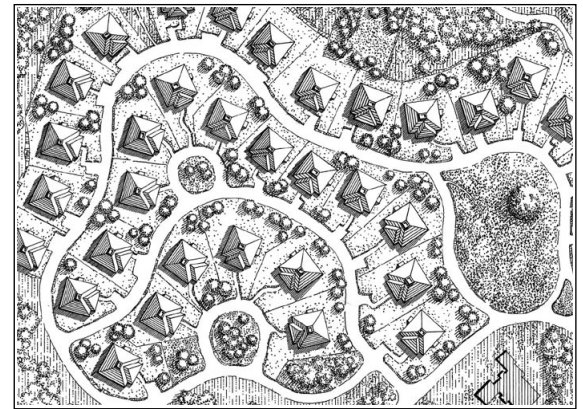


single-family production / detached  
merit

copeland hill cottages at the greenbrier resort, white sulphur springs, w.va.

ferguson shamamian & rattner architects

new york city



Our judges praised the Copeland Hill Cottages development for its pedestrian-friendly neighborhood design and for architecture that “doesn’t over-style itself.” Nestled in the Allegheny Mountains of West Virginia, the cottages are part of the Greenbrier expansion plan, which sought to build 35 four-bedroom cottages within walking distance of the resort’s main structure. Ferguson Shamamian & Rattner Architects executed the plan.

Rather than impose a rigid grid on the small parcel, the architects clustered the homes within the site’s varying topography, augmenting the plan with meandering roads and footpaths, says project architect Donald M. Rattner.

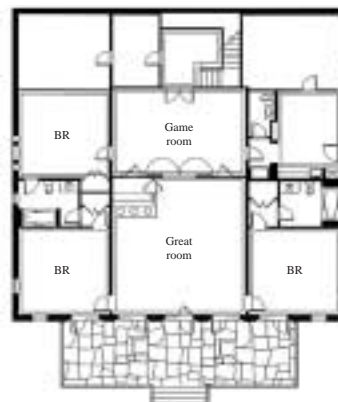
“We were operating within a historical framework, so it was important for the architecture to be consistent,” says Rattner, who has since left FS&R and launched his own New York City–based firm, Studio for Civil Architecture. As a result, the cottages echo the hotel’s classical Georgian architecture, but vernacular details such as clapboard siding and wood porches are also evident.

This is a “fresh take on a vernacular house,” said the judges. “It looks like a nice place to walk around.”—*n.f.m.*



The homes are clustered around a series of public and common spaces to relieve the density. Modified for a private owner, the plan below features an open flow and expanded lower-level living space.

**project architect:** Donald M. Rattner, Ferguson Shamamian & Rattner Architects; **land planner:** Christophe Drumain, Design Works, Charleston, S.C.; **developer:** Dolan Pollack & Schram, Richmond Hill, Ga.; **general contractor:** Richard Swift, Sterling Construction Management, White Sulphur Springs; **landscape architect:** Christophe Drumain, Design Works; **interior designer:** Linda Carr, Knight Carr & Co., Greensboro, N.C.; **project size:** 3,000 square feet per unit; **site size:** 15 acres; **construction cost:** Withheld; **sales price:** Withheld; **photographer:** Mick Hales. See page 106 for product information.



ground floor



first floor